

# South Africa

POPULATION 2018 **58 MILLION**

## ESTIMATES OF TB BURDEN,<sup>a</sup> 2018

	NUMBER (thousands)	RATE (per 100 000 population)
Total TB incidence	301 (215–400)	520 (373–691)
HIV-positive TB incidence	177 (127–235)	306 (219–406)
MDR/RR-TB incidence <sup>b</sup>	11 (7.2–16)	19 (12–28)
HIV-negative TB mortality	21 (20–23)	37 (35–39)
HIV-positive TB mortality	42 (30–57)	73 (51–99)

## ESTIMATED PROPORTION OF TB CASES WITH MDR/RR-TB, 2018

New cases	3.4% (2.5–4.3)
Previously treated cases	7.1% (4.8–9.5)

## TB CASE NOTIFICATIONS, 2018

Total new and relapse	227 999
– % tested with rapid diagnostics at time of diagnosis	71%
– % with known HIV status	90%
– % pulmonary	89%
– % bacteriologically confirmed <sup>c</sup>	70%
– % children aged 0–14 years	7%
– % women	37%
– % men	56%
Total cases notified	235 652

## UNIVERSAL HEALTH COVERAGE AND SOCIAL PROTECTION

TB treatment coverage (notified/estimated incidence), 2018	76% (57–110)
TB patients facing catastrophic total costs	
TB case fatality ratio (estimated mortality/estimated incidence), 2018	22% (14–30)

## TB/HIV CARE IN NEW AND RELAPSE TB PATIENTS, 2018

	NUMBER	(%)
Patients with known HIV-status who are HIV-positive	120 862	59%
– on antiretroviral therapy	104 625	87%

## DRUG-RESISTANT TB CARE, 2018

% of bacteriologically confirmed TB cases tested for rifampicin resistance <sup>c</sup>	
– New cases	92%
– Previously treated cases	94%
Laboratory-confirmed cases <sup>d</sup>	MDR/RR-TB: 13 199, XDR-TB: 553
Patients started on treatment <sup>d,e</sup>	MDR/RR-TB: 9 558, XDR-TB: 539
MDR/RR-TB cases tested for resistance to second-line drugs	7 469

## TREATMENT SUCCESS RATE AND COHORT SIZE

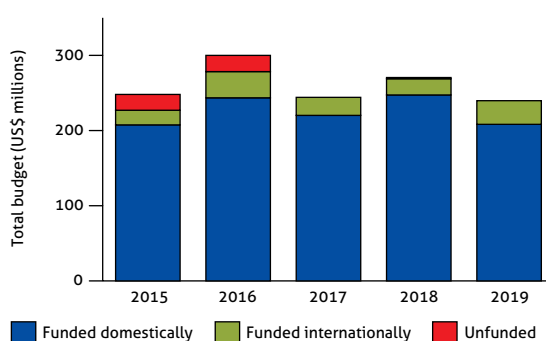
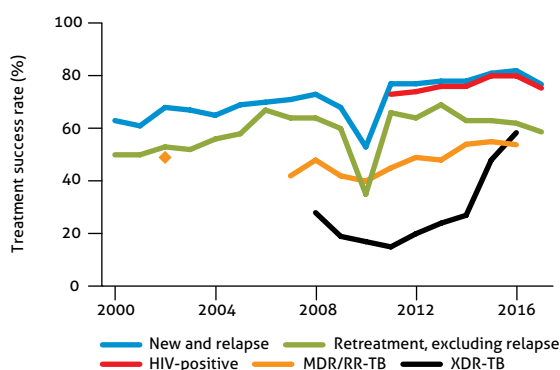
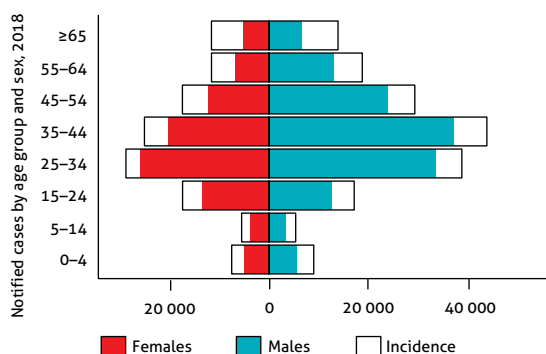
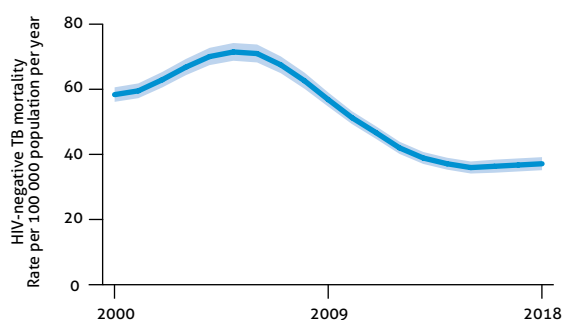
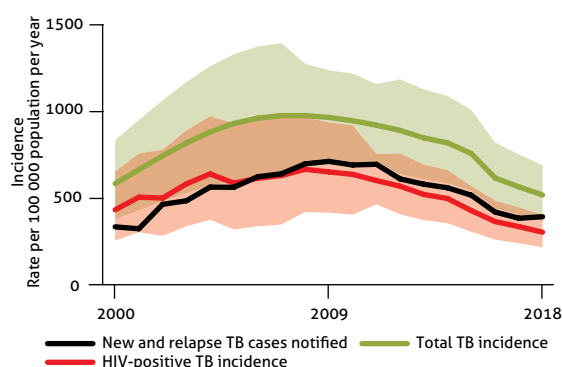
	SUCCESS	COHORT
New and relapse cases registered in 2017	77%	240 332
Previously treated cases, excluding relapse, registered in 2017	59%	6 508
HIV-positive TB cases registered in 2017	75%	134 672
MDR/RR-TB cases started on second-line treatment in 2016	54%	11 159
XDR-TB cases started on second-line treatment in 2016	58%	601

## TB PREVENTIVE TREATMENT, 2018

% of HIV-positive people (newly enrolled in care) on preventive treatment	65%
% of children (aged <5) household contacts of bacteriologically confirmed TB cases on preventive treatment	59% (54–65)

## TB FINANCING, 2019

National TB budget (US\$ millions)	240
Funding source:	87% domestic, 13% international, 0% unfunded



Data are as reported to WHO. Estimates of TB and MDR/RR-TB burden are produced by WHO in consultation with countries. Estimates of TB incidence and mortality for South Africa will be reviewed after final results from the national TB prevalence survey are available in 2020.

<sup>a</sup> Ranges represent uncertainty intervals.

<sup>b</sup> MDR is TB resistant to rifampicin and isoniazid; RR is TB resistant to rifampicin.

<sup>c</sup> Calculated for pulmonary cases only.

<sup>d</sup> Includes cases with unknown previous TB treatment history.

<sup>e</sup> Includes patients diagnosed before 2018 and patients who were not laboratory-confirmed.